

TASCA Collection
design by Simone Viola



T O O U



Lounge chair

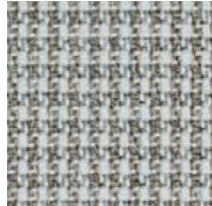


Ottoman



Pillow

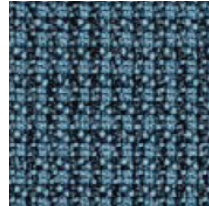
BAILEY by **Gabriel**



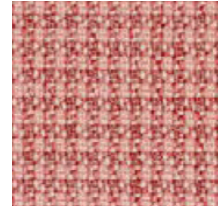
gray



anthracite



blue



pink

Eco leather



black



cognac



sand

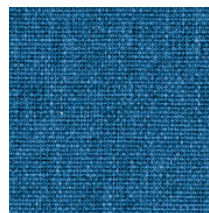
Standard fabric



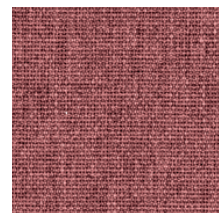
gray



anthracite



blue



pink

Design no.		8626
Fields of application		contract - soft seating
Material	polyester	100%
Weight		510g/lm - (16.45 oz/lin.yd.)
Width		140 cm (55")
Abrasion resistance	rubs · EN ISO 12947-2(Martindale)	90,000
Pilling	scale 1-5, max 5 - EN ISO 12945-2	4
Colour fastness to light	scale 1-8, max 8 - EN ISO 105-B02 AATCC 16 Light fastness	5-7 pass
Colour fastness to rubbing	scale 1-5, max 5 - EN ISO 105x12 (wet/dry)	4-5/4-5
Maintenance	dry cleaning ⁶⁰ Shrinkage max. 1% ⁷⁴ Shrinkage max. 3%	P(W)
Flammability	EN ISO 1021 1&2 Flame retardant performance is dependent upon the foam used.	pass
Design/Colours	Cenk Kivrikoglu	
Subject to changes and colour differences		



ECO-LEATHER

Key indicator	Unit	Reference Value	Remark
Width	cm	≥137	
Thickness	mm	1.1±0.1	
Abrasion strength	Martindale	≥100000	Load: 12kPa
Tensile strength	(kg)	Length 297 Width 81.5	grab
Tear strength	(N)	Length Unusual tear Width 39	Elmendorf Tear
Polyester Micro	g/m ²	280±10	
Suede weight			
Leather weight	g/m ²	770±10	
Crocking	Dry and wet	≥ class 4	
Composition	Polyester Micro Suede 20-25%	PVC 75-80%	
Environment Standard		8P	
8P:			
	1.Dibutyl phthalate (DBP)		
	2.Benzylbutyl phthalate (BBP)		
	3.Bis-(2-ethylhexyl) phthalate DEHP)		
	4.Diisodecyl phthalate (DIDP)		
	5.Di-n-octyl phthalate (DNOP)		
	6.Diisononyl phthalate (DINP)		
	7.Diisobutyl phthalate (DIBP)		
	8.Di-n-hexyl phthalate (DNHP)		

STANDARD FABRIC

Material:100% polyester	Weight:325g/m ²	Width:1.45m
Color fastness:	class 4-5	
Color fastness to rubbing:	class 4-5	
Abrasion strength(Martindale):	30,000 to 50,000 cycles	