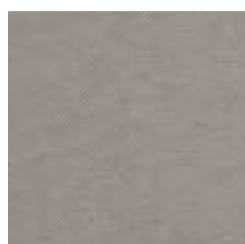




FABRICS &
ECO -
LEATHERS
CAT A

Nino

High abrasion resistant material, suitable for contract with a wool-like look and touch.



35-135



17-135



18-17



27-147



69-38



18-72



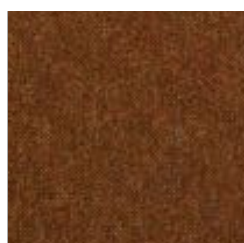
38-38



72-24



147-12



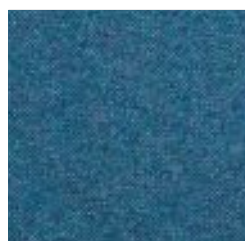
143-87



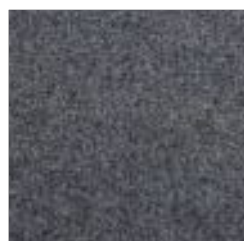
133-38



22-27



22-147



24-24



69-87

Colors may slightly vary due to photographic lighting sources or your monitor settings.

Nino

High abrasion resistant material, suitable for contract with a wool-like look and touch.



09-24



07-135

PRODUCT SPECIFICATIONS

Technical Informations	Unit	Value	Test Method
Composition	100% polyester		
Weight	gr/m ²	469 ±10%	
Width	cm	140 ±2	
Roll Meter	m	50	
Resistance to Abrasion	tour	70.000	ISO 12947-2:1998
Light Fastness		4-5	ISO 105-X12:2001
Pilling		4-5	ISO 12945-2:2000

Product Characteristics

- Only valid for Nino colour codes.
 - It can be cleaned with neutral cleaning materials. Chemical solvents should not be used.
 - The detergent must not include oxide bleach and bleach.
 - There may be colour and tone differences between different lots, arising from the nature of the production and within conventionally accepted limits.
 - The product should not be exposed to direct sunlight.
 - The cutting should be done after the approval of the colour, tone and defect controls by the related parties. In this context, taking into account that, although exceptional, there may be tonal differences of products that arrive in pieces, they should be checked with the delivery of the product before cutting. Making upholstery without above mentioned examination may cause not getting the desired result.
 - While cutting or upholstery, the products should never be left folded, nor should they be left under-weight that may cause forming lines on them.
 - The tape should never be used on the product surface. This matter, which our company pays attention to, should not be overlooked after the product has been checked or if it is wrapped for a second time during use. When the leftover product should be rolled, please pay attention not to fold it tightly.
 - All kinds of leather and velvet should not come into direct contact with the sponge. Sponge should be covered with interlining or cotton lining.
 - Stains, such as oil, chocolate, chewed gum should never be cleaned with liquid (water, thinner, acetone and other solvents).
- Dry cleaning methods are also recommended for such stains.
- Vacuum cleaner can be used on daily and weekly basis.

New Sabine

Water repellent and high-colored material with linen effect.



TAN



WHITE



STONE



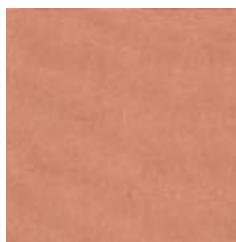
SAND



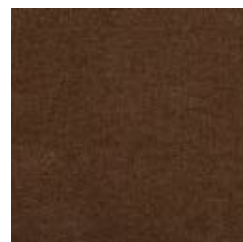
SILVER



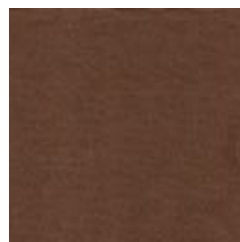
TAUPE



BEIGE RED



SADDLE



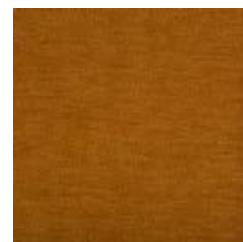
PALE BROWN



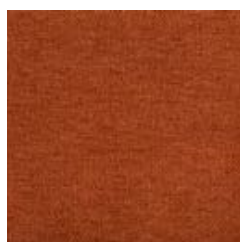
WINE



CEMENT GREY



MAROC



APRICOT



KIWI



NORDIC



GREEN GREY



AQUA

Colors may slightly vary due to photographic lighting sources or your monitor settings.

New Sabine

Water repellent and high-colored material with linen effect.



BLACK



BLUE



ANT



Colors may slightly vary due to photographic lighting sources or your monitor settings.

New Sabine

PRODUCT SPECIFICATIONS

Technical Informations	Unit	Limit	Value	Test Method
Composition	100% polyester			
Weight	gr/m ²		380	ISO 3801
Width	cm		137	ISO 22198
Roll Meter	m		50	ISO 12947-2 ISO 1294
Resistance to Abrasion	martindale		40.000	BS EN ISO 12947-2
Tear Strength	n	warp weft	190 154	ISO 13937-2
Resistance to Seam Slippage	mm	warp weft	1-2 0-1	ISO 13906-2
Pilling	2000 dvr		4	ISO 12945-2
Light Fastness		dry wet	5 5	ISO 105-X12

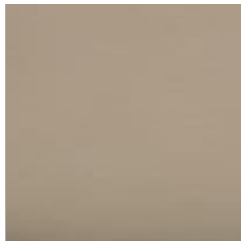
Product Characteristics

- Only valid for New Sabine colour codes.
- It can be cleaned with neutral cleaning materials. Chemical solvents should not be used.
- The detergent must not include oxide bleach and bleach.
- There may be colour and tone differences between different lots, arising from the nature of the production and within conventionally accepted limits.
- The product should not be exposed to direct sunlight.
- The cutting should be done after the approval of the colour, tone and defect controls by the related parties. In this context, taking into account that, although exceptional, there may be tonal differences of products that arrive in pieces, they should be checked with the delivery of the product before cutting. Making upholstery without above mentioned examination may cause not getting the desired result.
- While cutting or upholstery, the products should never be left folded, nor should they be left under-weight that may cause forming lines on them.
- The tape should never be used on the product surface. This matter, which our company pays attention to, should not be overlooked after the product has been checked or if it is wrapped for a second time during use. When the leftover product should be rolled, please pay attention not to fold it tightly.
- All kinds of leather and velvet should not come into direct contact with the sponge. Sponge should be covered with interlining or cotton lining.
- Stains, such as oil, chocolate, chewed gum should never be cleaned with liquid (water, thinner, acetone and other solvents).
- Dry cleaning methods are also recommended for such stains.
- Vacuum cleaner can be used on daily and weekly basis.
- The dark colours of this product, which is produced as ball painting, should be cleaned with a damp cloth after laying and afterwards, the paint crumbs that could remain between the textures. This process can be done several times if necessary.
- The product has a teflon feature.
- Please get a confirmation about stocks.

Colors may slightly vary due to photographic lighting sources or your monitor settings.

New King Eco-leather

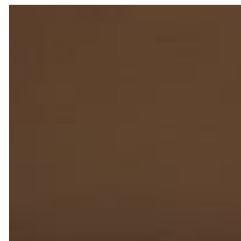
Easy to clean artificial leather made of a special PVC and polyurethane mix with the support of polyester base lining.



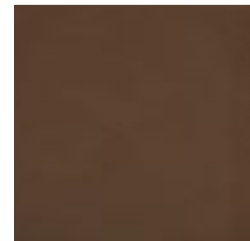
13742



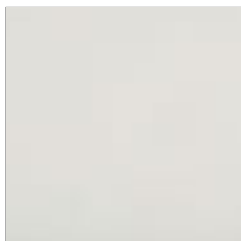
62501



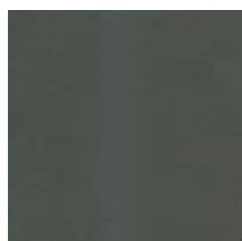
13723



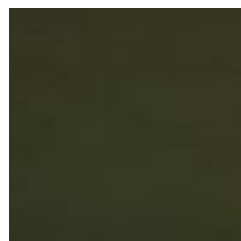
13724



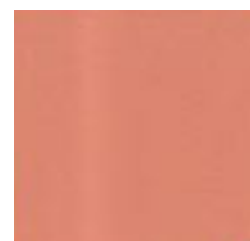
6



62504



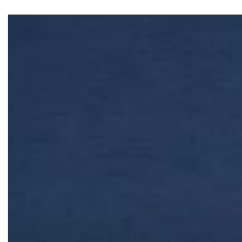
17563



62502



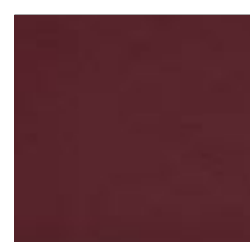
62503



17566



13823



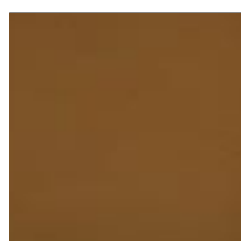
17567



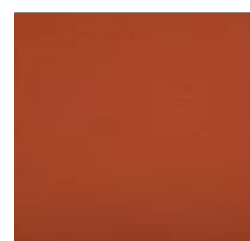
62505



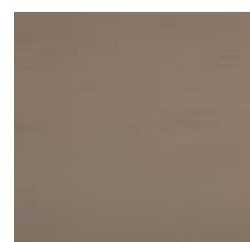
13592



13721



24329



1

Colors may slightly vary due to photographic lighting sources or your monitor settings.

New King Eco-leather

Easy to clean artificial leather made of a special PVC and polyurethane mix with the support of polyester base lining.



17565



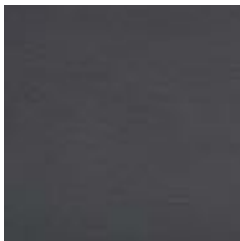
24328



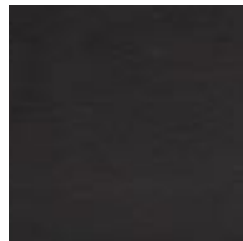
17560



13591



17568



13727



Colors may slightly vary due to photographic lighting sources or your monitor settings.

New King Eco-leather

PRODUCT SPECIFICATIONS

Technical Informations	Unit	Value	Test Method
Composition	76% pvc, 22% polyester, 2% pu		
Weight	gr/m ²	600 ±5%	
Width	cm	138-140	
Roll Length	m	30	
Resistance to Abrasion	mantindale	230.000	BS EN ISO 12947-2:1999&4:1999
Bursting Strength		> 600 kPa	BS EN ISO 5470-1:1999
Elongation Strength	warp weft	5803 g. 2853 g.	BS EN ISO 4674-1:1999
Resistance to Seam Slippage	warp weft	250 n 250 n	BS 3320:1998
Flammability		pass	BS 5852-1:1979 EN 1021 1-2
Light Fastness		5	DIN EN ISO 105-B02:2002

Product Characteristics

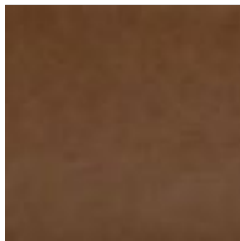
- Only valid for New King colour codes.
- Our Atlantis product line has flame retardancy feature.
- The cleaning process should start around the stain and held without dispersing the stain. It should be cleaned by gently wiping.
- All kinds of real and artificial leather should not be cleaned with bleach, detergent, coloured soap and similar materials and the product should not be exposed to direct sunlight.
- The product should be kept away from sources of strong light (spot, etc.) and heat.
- The using place and purpose of the product should be conventionally accepted places and purposes. No liability can be accepted for products that are not used properly.
- Leather products should not be kept in plastic packaging and humid places for a long time. Solid objects such as toys and jewellery may cause unintended starches on the material.
- Leather-covered products should be placed at least 50 cm away from heat sources (stoves, radiators, fireplaces, etc.). Otherwise, the leather may lose moisture which may cause undesired cracks.
- Impacts, scratches, etc. that may occur due to transportation and external. should be considered out of warranty.
- Direct contact of pets with leather goods should be prevented.
- Direct contact of the products with high surface temperature (iron, etc.) with the leather may cause a damage.
- Protect the leather from harsh blows.
- Since ink on newspapers or magazines may get on the product and leave a permanent stain, do not leave it on the product. Especially if you sit with new jeans that give dark coloured paint on light coloured leather as an example, there may be stains. Note that this stain is not caused by the leather itself, but by the trousers that dye and colour.
- Weekly remove the dust or dirt on the surface of the product with a damp white and soft cotton cloth dampened with soapy water, rinse and dry when necessary.
- When coffee, tea, etc. spilled: Use a highly absorbent white cloth or paper. Do not delete it immediately! Make sure the stain is absorbed by the cloth or paper.
- Wipe off the remaining moisture with a soft cloth in circular motions.
- Alcohol and cologne are not recommended for difficult stains such as ink, ballpoint pen, lipstick. Wipe with warm soapy water with gentle circular movements.
- There may be colour and tone differences between different lots, arising from the nature of the production and within conventionally accepted limits.
- Please get a confirmation about stocks.

Canyon Eco-leather

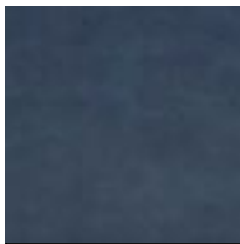
High abrasion resistant and flame retardant high-quality easy to clean artificial leather with a genuine leather look.



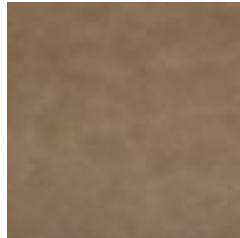
21728



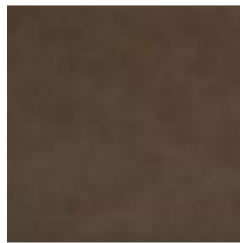
21749



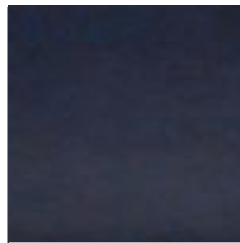
21755



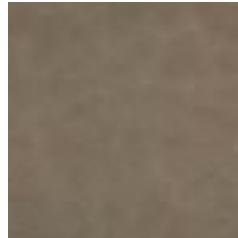
22658



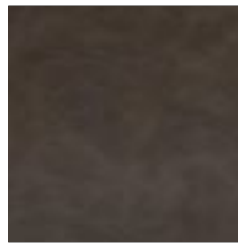
22663



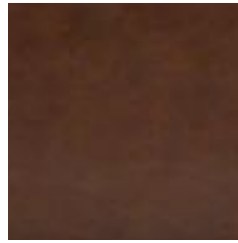
21757



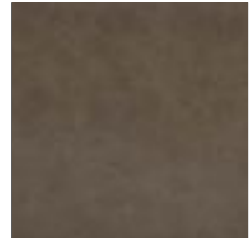
22661



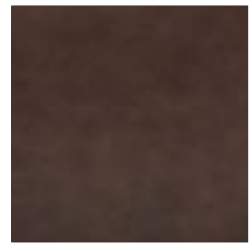
21748



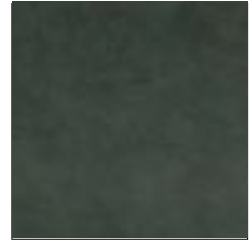
21750



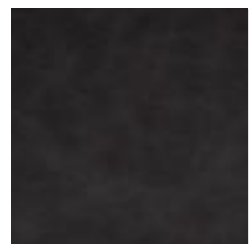
21747



21753



21754



21758

Colors may slightly vary due to photographic lighting sources or your monitor settings.

Canyon Eco-leather

PRODUCT SPECIFICATIONS

Technical Informations	Unit	Value	Test Method
Composition	80% pvc, 18% polyester, %2 pu		
Weight	gr/m ²	700 ±5%	TS 6450
Thickness	mm	1,35 ±5%	ISO 2589
Width	cm	140 ±2	TS 4119
Roll Length	m	30	
Resistance to Abrasion	martindale	>100.000	BS EN ISO 12947-2:2016
Tensile Strength (Lenght)	n	485	ISO 1421
Tensile Strength (Across)	n	290	ISO 1421
Elongation Strenght		Length 68 g Across 240 g	ISO 1421
Colour Fastness to Light		+5	DIN EN ISO 105-B02:1994
Flammability		Pass	BS 5852-1:1979 EN 1021 1-2

Product Characteristics

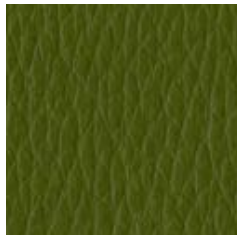
- Only valid for Canyon colour codes.
- The cleaning process should start around the stain and held without dispersing the stain. It should be cleaned by gently wiping.
- You can wipe off ballpoint pen stains with 20% ethanol. For other stains such as coffee, tea, milk, cosmetics, jam, syrup, fruit juice 40c lukewarm water, neutral cleaning agents and sponge can be used.
- In oil and grease stains, the stain can be wiped of with the help of a brush after the chalk powder is used for covering the stain.
- The shoe polish stain can be removed with perchloroethylene or 10% diluted ammonia.
- All kinds of real and artificial leather should not be cleaned with bleach, detergent, coloured soap and similar materials and the product should not be exposed to direct sunlight. It should be kept away from sources of strong light (spot, etc.) and heat.
- There may be colour and tone differences between different lots, arising from the nature of the production and within conventionally accepted limits.
- All kinds of leather and velvet should not come into direct contact with the sponge. Sponge should be covered with interlining or cotton lining.
- Please get a confirmation about stocks.

Bugatti Eco-leather

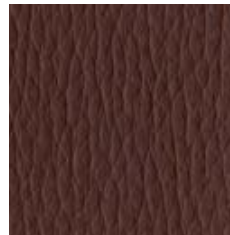
Easy cleaning artificial leather. Fire-reterdant. Anti-bacterial.



60445



60449



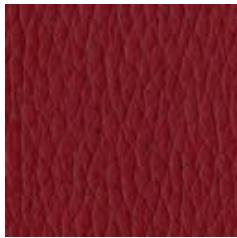
60450



60460



60487



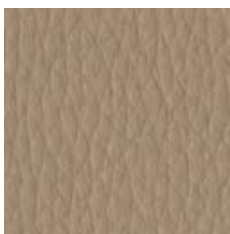
60489



60499



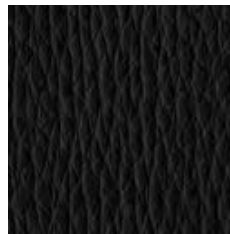
60495



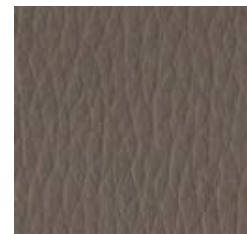
60496



60498



60508



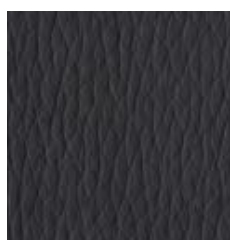
60501



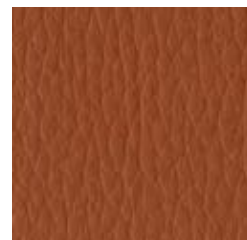
60502



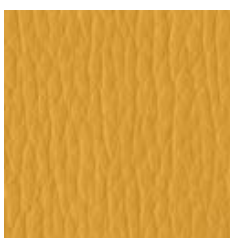
60504



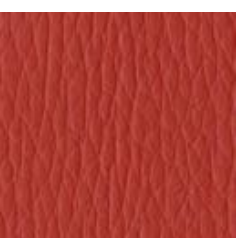
61383



61382



60446



60447



60448



60505

Colors may slightly vary due to photographic lighting sources or your monitor settings.

Bugatti Eco-leather

PRODUCT SPECIFICATIONS

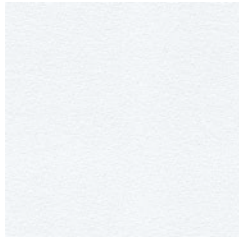
Technical Properties	Results	Standards
Composition	81% PVC/ 3% Acrylic PU/ 16% Polyester	EN 12127
Width	140+/-3 cm	
Weight	650 g/m ²	
Roll Length	35 m	
Physical Properties		
Waterproof	yes	EN20811
Colour Fastness to Light Outdoor	6-7	ISO 105 B04
Weathering UV Test	4	ISO 4892-2
Colour Fastness to Chlorine, Salt Water	4-5	ISO 105 E03
Tensile Strength (warp/weft) N[%]	512 [55,7], 620 [78]	ISO 13934-1
Tensile Elongation (warp/weft)	41,43	ISO 1421
Tearing Strength (warp/weft)	26,28	ISO 4674
Abrasion Resistance (Martindale)	200000 cycles	ISO 12947-2
Flexing Endurance	no damage at 100000 cycles	ISO 32100
Microbial and Fungal Resistance	degree 0, excellent	ISO 846/AATCC 147
Extreme Exposure Temperatures	-23°C / +80°C	
Coating Adhesion (warp/weft)	42,39	ISO 2411
Anti-Static	against dust	
FR Standards		
France	M2	NFP 503,504,505 optional
Germany	B1	DIN 4102 optional
Italy	Classe Uno	UNI 9175 and UNI 9177
Europe	pass	EN 1021-1,2
United Kingdom	Crib 5	BS 5852 nal
United Kingdom	pass	BS 5852 source 0, 1 cig and match
USA	pass	NFPA 260A/UFAC Class 1
USA	pass	CAL 117
Marine	pass	IMO FTPC P8
Aeronautical	pass	NY/NJ Port authority FAR Part 25.853
Management Systems		
Environment and Health		No Bisphenol A (BPA)
		Oekotex 100 class IV
		REACH certified
		Phthalate free
		Bromine free no halogenated FR chemicals
		Non-Toxic

Care and cleaning instructions

Clean regularly with a damp cloth, use water with a mild soap, no aggressive nor abrasive detergents, no wax. This information is not a guarantee and does not relieve the user from the responsibility of the proper and safe use of the product and all cleaning agents. Please check compatibility when using this product in combination with painted or varnished surfaces.

Xtreme

A modern crepe weave fabric made from 100% post-consumer recycled polyester.



YS165



YS108



YS096



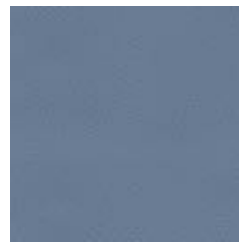
YS156



YS094



YS074



YS095



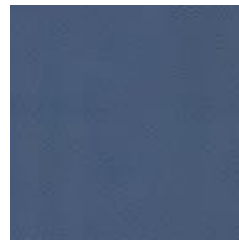
YS072



YS077



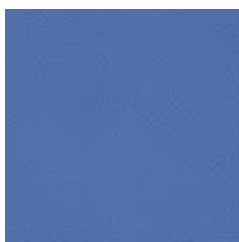
YS073



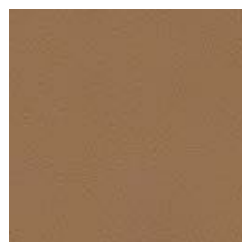
YS004



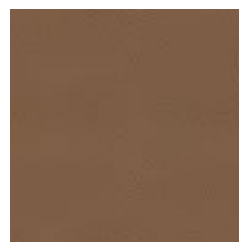
YS159



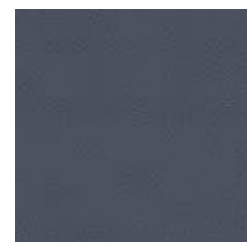
YS097



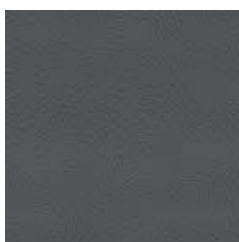
YS071



YS091



YS171



YS081



YS102



YS141



YS160

Colors may slightly vary due to photographic lighting sources or your monitor settings.

Xtreme

A modern crepe weave fabric made from 100% post-consumer recycled polyester.



YS168



YS105



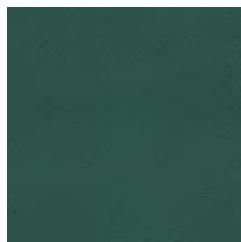
YS076



YS079



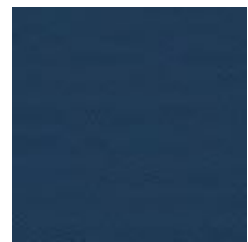
YS101



YS047



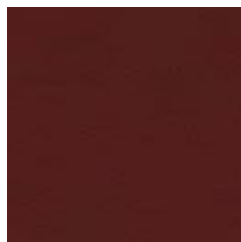
YS035



YS005



YS082



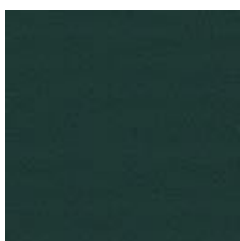
YS136



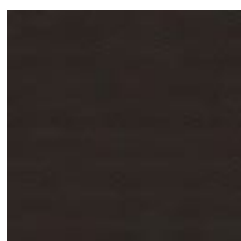
YS030



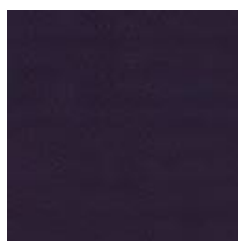
YS100



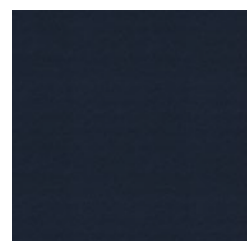
YS045



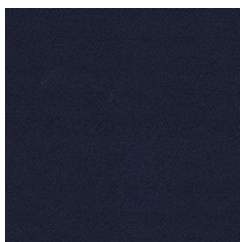
YS046



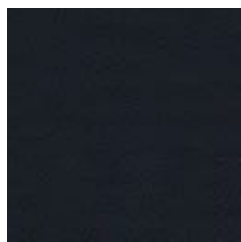
YS084



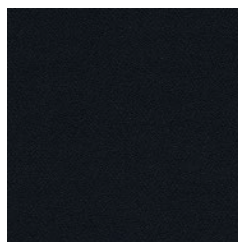
YS026



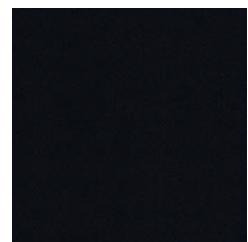
YS024



YS172



YS145



YS009

Colors may slightly vary due to photographic lighting sources or your monitor settings.

Xtreme



YS173

PRODUCT SPECIFICATIONS

Application	Task Seating
Composition	100% post-consumer recycled polyester
Environmental	Certified to the EU Ecolabel, Certified to OEKO-TEX® Standard 100, Certified to Indoor Advantage™ "Gold" Made from 100% recycled polyester Non metallic dyestuffs
Width	140 cm minimum
Weight	310 g/m2 ±5%
Abrasion Resistance	Heavy duty / 10 year guarantee. Independently certified to ≥100,000 Martindale cycle
Flammability	EN 1021 - 1&2 (cigarette & match), BS 7176 Low Hazard, BS 5852 Ignition Source 5, BS 7176 Medium Hazard, DIN 4102 B1, NF D 60-013 ,ÖNORM B 3825 & A 3800-1 (over 58 kg/m3 CMHR foam), UNI 9175 Classe 1 IM, BS 476 Part 7 Class 1
Light Fastness	6 (ISO 105 - B02)
Fastness to Rubbing	Wet: 4, Dry: 4 (ISO 105 - X12)
Bleach cleanable	ISO 105 E03 colour change 4 for dilution factor 1:4 chlorine solution.
Guarantee	10 Years

Cleaning

Vacuum regularly. Wipe with a damp cloth using soap and water or use proprietary upholstery shampoo. For deeper cleaning use steam, bleach, alcohol or professionally dry clean. Can be washed at 60°C.

X2

Stretch, flammability and abrasion performance in an unobtrusive background grey mélange effect.



Colors may slightly vary due to photographic lighting sources or your monitor settings.

X2

Stretch, flammability and abrasion performance in an unobtrusive background grey mélangé effect.



AK001

PRODUCT SPECIFICATIONS

Application	Task Seating / Soft Seating
Composition	100% Recycled Flame Retardant Polyester
Environmental	Certified to the EU Ecolabel, Certified to OEKO-TEX® Standard 100 Certified to Indoor Advantage™ "Gold" Made from 100% recycled polyester. Non metallic dyestuffs.
Width	140 cm minimum
Weight	310 g/m2 ±5%
Abrasion Resistance	Heavy duty / 10 year guarantee. Independently certified to ≥100,000 Martindale cycles
Flammability	EN 1021 - 1&2 (cigarette & match), BS 7176 Low Hazard, BS 5852 Ignition Source 5 BS 7176 Medium Hazard, DIN 4102 B1, NF D 60-013, ÖNORM B 3825 & A 3800-1 (58 kg/m3 CMHR Foam) UNI 9175 Classe 1 IM
Light Fastness	6 (ISO 105 - B02)
Fastness to Rubbing	Wet: 4, Dry: 4 (ISO 105 - X12)
Bleach cleanable	ISO 105 E03 colour change 4 for dilution factor 1:4 chlorine solution.
Guarantee	10 Years

Cleaning

Vacuum regularly. Wipe with a damp cloth using soap and water or use proprietary upholstery shampoo. For deeper cleaning use steam, bleach, alcohol or professionally dry clean. Can be washed at 60°C.

Era

A subtle, two tone polyester fabric containing stretch in both directions for ease of upholstery.



CSE01



CSE30



CSE33



CSE46



CSE19



CSE39



CSE03



CSE45



CSE38



CSE25



CSE24



CSE23



CSE36



CSE31



CSE34



CSE20



CSE07



CSE08



CSE37

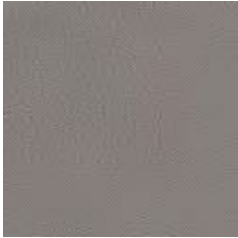


CSE43

Colors may slightly vary due to photographic lighting sources or your monitor settings.

Era

A subtle, two tone polyester fabric containing stretch in both directions for ease of upholstery.



CSE02



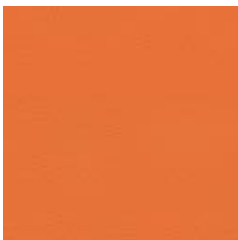
CSE32



CSE16



CSE10



CSE05



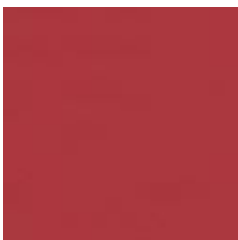
CSE27



CSE26



CSE29



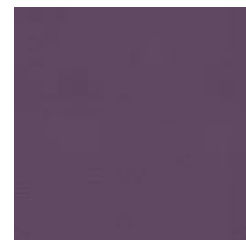
CSE06



CSE17



CSE28



CSE09



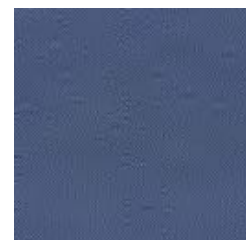
CSE11



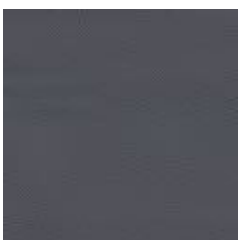
CSE18



CSE15



CSE42



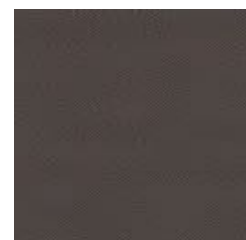
CSE13



CSE12



CSE35



CSE21

Colors may slightly vary due to photographic lighting sources or your monitor settings.

Era

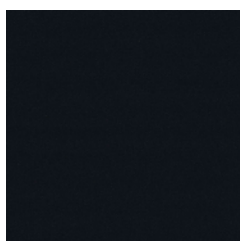
A subtle, two tone polyester fabric containing stretch in both directions for ease of upholstery.



CSE44



CSE40



CSE14



CSE41

PRODUCT SPECIFICATIONS

Application	Task Seating / Soft Seating
Composition	100% Polyester
Environmental	Certified to OEKO-TEX® Standard 100 Certified to Indoor Advantage™ "Gold" Non metallic dyestuffs
Width	140 cm minimum
Weight	320 g/m2 ±5%
Abrasion Resistance	Heavy duty / 10 year guarantee. Independently certified to ≥100,000 Martindale cycles
Flammability	EN 1021 - 1&2 (cigarette & match), BS 7176 Low Hazard EN 13501-1 Adhered Class B, s1, d0, EN 13501-1 Un-adhered Class C, s1, d0 BS 7176 Medium Hazard with EnviroFlam5
Light Fastness	5 (ISO 105 - B02)
Fastness to Rubbing	Wet: 4, Dry: 4 (ISO 105 - X12)
Bleach cleanable	ISO 105 E03 colour change 4 for dilution factor 1:4 chlorine solution.
Guarantee	10 Years

Cleaning

Vacuum regularly. Wipe with a damp cloth using soap and water or use proprietary upholstery shampoo. For deeper cleaning use steam, bleach, alcohol or professionally dry clean. Can be washed at 60°C.